

2.4GHz 20dBi MiMO/Dual Polarized Panel Antenna

Model: DP2400G20D

V-Pol & H-Pol, 2400-2500GHz, 2x20dBi, Mechanical Downtilt 0-15deg

Application:

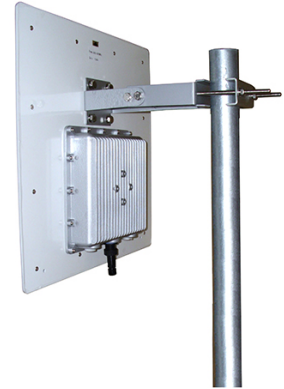
MiMO 2.4GHz, Application

2.4 GHz ISM application

WiFi & wireless video systems

Directional and multipoint applications

IEEE 802.11b, 802.11g & IEEE 802.11n Wireless LAN



Features:

All weather operation

Superior performance

Light weight, Compact Size

Model	DP2400G20D
Frequency	2400-2500 MHz
Polarization	Vertical and Horizontal
Horizontal Beam Width	17 deg
Vertical Beam Width	17 deg
Gain	2 x 20 dBi
VSWR	<1.5Typical; Max<2.0
F/B	>25dB
Isolation	>25dB
Max Power	50 W
Impedance	50 Ω

Mechanical Specification

Radome Material	ABS with UV Protection
Lightning Protection	Direct Ground
Connector	2xN-female
Weight	3 kg
Size	450x135x20mm
Mounting	Indoor / Outdoor
Operating Temperature Range	-40 to +70 Degrees
Storage Temperature	-50 to +75 Degrees