

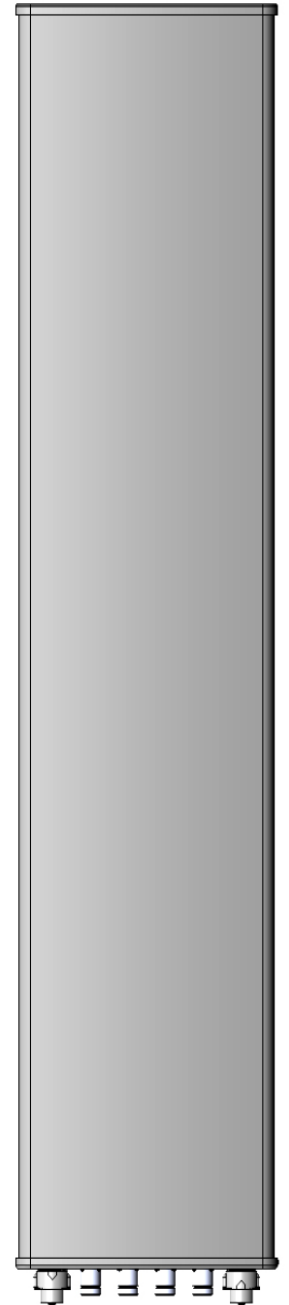
# **DES1721G18XX65**

## Sector Panel Antenna

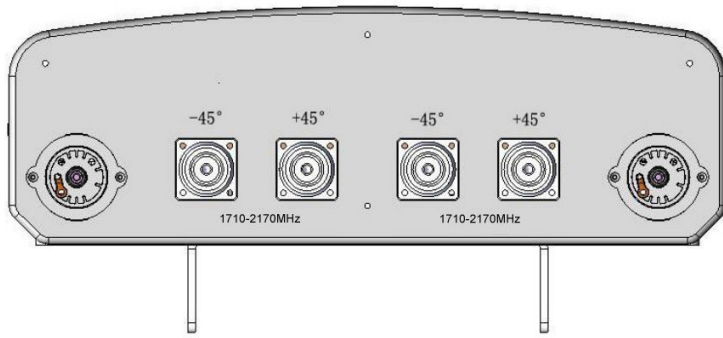
1710–2170MHz | 1710–2170MHz | XX-Pol | 65° | 17.5dBi

Electrical Downtilt 0°–12°, Set by Hand or RCU(Remote Control Unit)

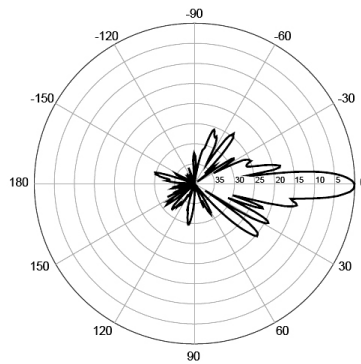
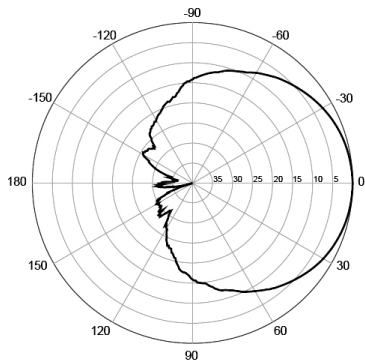
<b>Electrical specifications</b>			
Model	DES1721G18XX65		
Frequency	1710-1880MHz	1850-1990MHz	1900-2170MHz
Polarization	(2 x) ± 45 °		
Horizontal Beamwidth	65 °	64 °	63 °
Vertical Beamwidth	7.0 °	6.9 °	6.5 °
Gain	16.9dBi	17.0dBi	17.6dBi
RCU Interface	AISG Version 2.0		
RCU Technology Type	External RCU		
Electrical Downtilt	0 ~ 12 °		
VSWR	< 1.5		
Impedance	50 Ω		
Upper Sidelobe Suppressions	0°...6°...12° 15dB...14dB...15dB		
Cross-polar ratio	≥15dB ( 0 ° )		
	≥10dB ( ± 60 ° )		
Front to Back Ratio	>25dB		
Isolation Between Ports	> 28dB		
Passive IM3 (2x20w Carrier)	<-150dBc		
Power Rating	300W		
Lightning Protection	Direct Ground		
<b>Mechanical Specifications</b>			
Dimensions(l,w,d)	1350 x 320 x 80mm		
Weight with mount	17 kg		
Connector Type	4 x 7/16 DIN-Female		
Radome Material	UV PVC		
Mechanical Downtilt	0 ~ 15°		
Reflector Material	Aluminum Alloy		
IP Grade	IP55		
Operating Temperature	-40°C ~+65°C		
Storage Temperature	-55°C ~+75°C		
Humidity	95%RH@+30		
Max Wind Velocity	200km/hr		



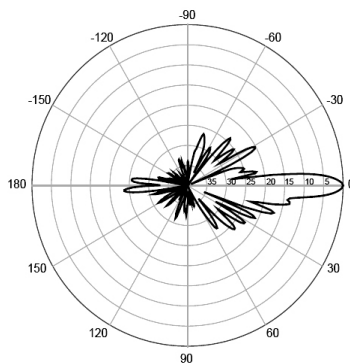
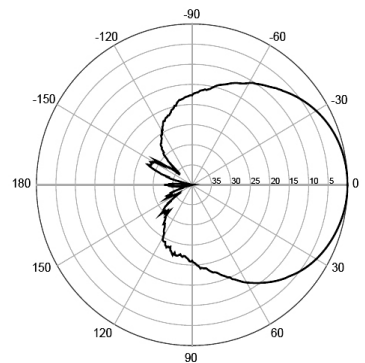
# Twin Band, XX-polarized



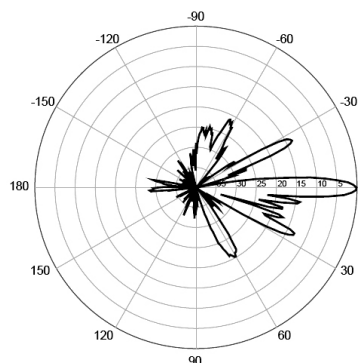
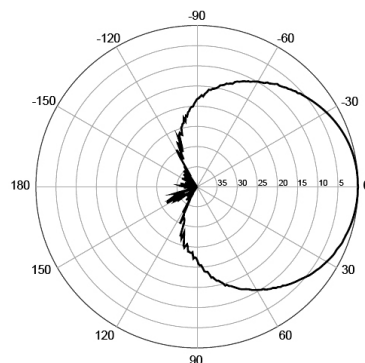
## Radio Pattern



## 1800MHz Horizontal and Vertical



## 1950MHz Horizontal and Vertical



## 2150MHz Horizontal and Vertical